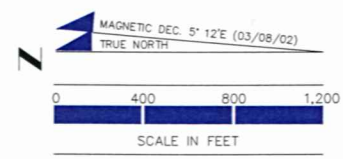
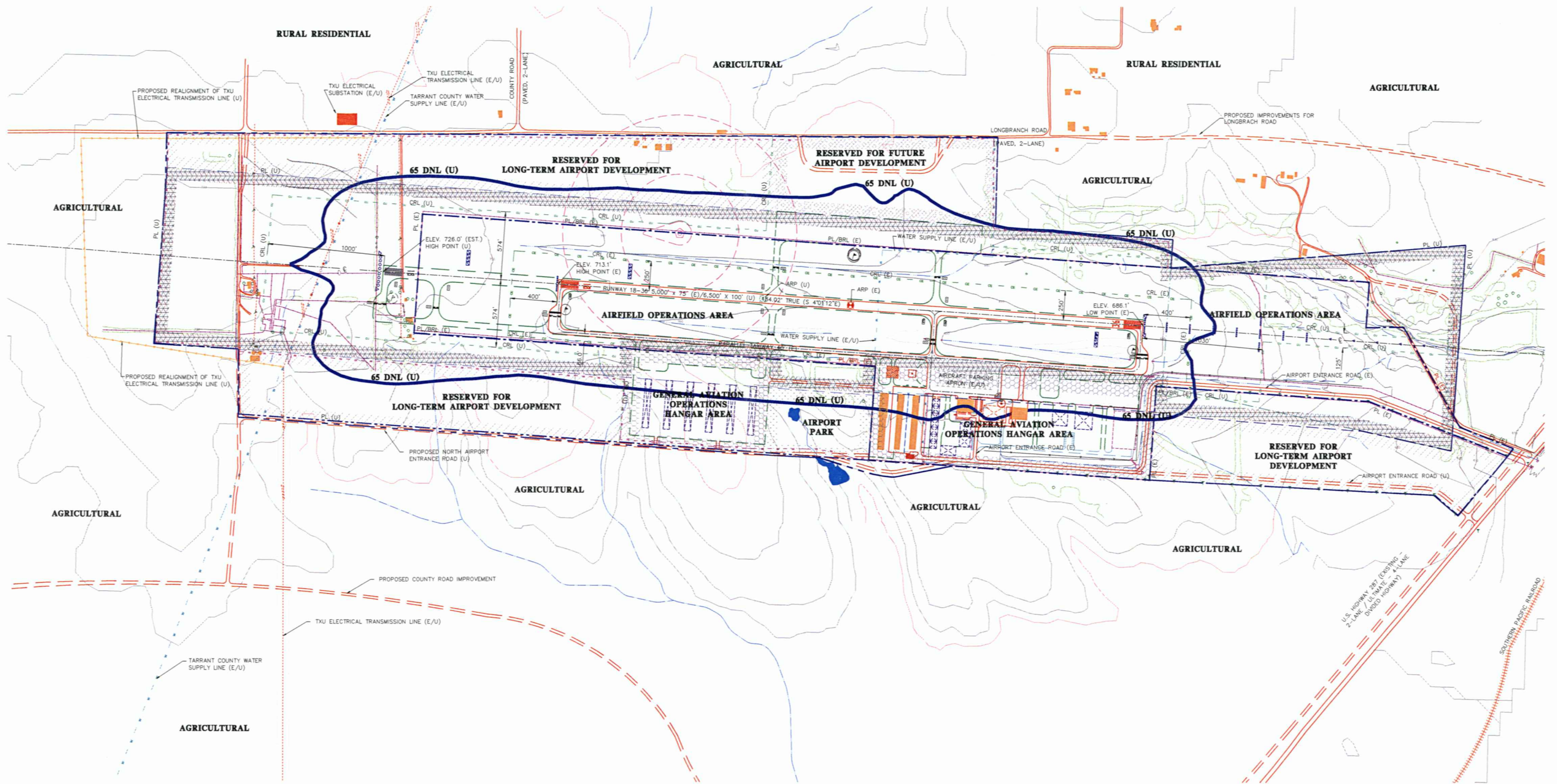


# AIRPORT LAND USE DRAWING



LAND USE LEGEND	
	AIRFIELD OPERATIONS AREA
	GENERAL AVIATION OPERATIONS/HANGAR AREA
	RESERVED FOR FUTURE AIRPORT DEVELOPMENT
	RESERVED FOR LONG-TERM AIRPORT DEVELOPMENT
	RESERVED FOR AIRPORT PARK
	PROPERTY LINE - EXISTING (E)
	PROPERTY LINE - ULTIMATE (U)
	BUILDING RESTRICTION LINE - ULTIMATE (U)
	CROP RESTRICTION LINE - EXISTING (E)
	CROP RESTRICTION LINE - ULTIMATE (U)

NO.	REVISIONS	BY	CHK'D	DATE
TEXAS DEPARTMENT OF TRANSPORTATION AVIATION DIVISION <input type="checkbox"/> ALP APPROVED ACCORDING TO FAA AC 150/5300-13 CH 7 PLUS THE REQUIREMENTS OF A FAVORABLE ENVIRONMENTAL FINDING PRIOR TO THE START OF ANY LAND ACQUISITION OF CONSTRUCTION AND AN FIA FORM 746-11 SUBMITTED PRIOR TO ANY CONSTRUCTION ON AIRPORT PROPERTY <input type="checkbox"/> ALP APPROVED ACCORDING TO FAA AC 150/5300-13 CH 7 PLUS THE CONDITIONS/COMMENTS IN LETTER DATED:				
AIRPORT SPONSOR CURRENT AND FUTURE DEVELOPMENT DEPICTED ON THIS ALP IS APPROVED AND SUPPORTED BY AIRPORT SPONSOR Mayor TITLE: MAYOR DATE: 3/9/04		AIRPORT SPONSOR REPRESENTATIVE Mayor TITLE: MAYOR DATE: 3/16/04		
PREPARED BY: <b>BUR</b> BOCHER, WELLS & RATLIFF CORPORATION ONE GLEN LAKES 8940 WALNUT HILL LANE, SUITE 900 DALLAS, TEXAS 75231-4386 JOB NO. 2001-285.5		PLH ISSUED BY: MFL DRAWN BY: MAW CHECKED BY: DATE: 10/25/00 DATE: 11/19/03 DATE: 11/19/03		
<b>AIRPORT LAND USE DRAWING</b> <b>MID-WAY REGIONAL AIRPORT</b> <b>MIDLOTHIAN AND WAXAHACHE, TEXAS</b>				